

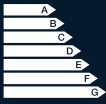
EASILY RETROFITTED ENERGY LOGGING

MAXIMIZED EFFICIENCY AND
AVAILABILITY THANKS TO
OUTSTANDING TRANSPARENCY



ENERYSSENS Series

ES4003 • ES4012 • ES8003 • ES8012



ENERGYSENS – the professional solution for measuring power, energy, current, voltage and frequency.



ENERGYSENS POWER MEASURING SYSTEM

POWER MEASUREMENT FOR EFFECTIVE ENERGY MANAGEMENT

Energy, power, current, voltage and frequency can be measured at individual consuming devices in low-voltage systems with the ENERGYSENS intelligent sensor system.

Energy consumption can thus be represented with more detailed localization and monitoring, as well as more transparently. This helps to avoid unnecessary costs and makes a contribution to sustainable company development.

ENERGYSENS not only helps you save energy costs, it also supports you in monitoring phase loads – in the area of preventive maintenance too – and in minimizing idle time.

ENERGYSENS – YOUR FUNDAMENTAL BUILDING BLOCK FOR INDUSTRY 4.0

Measurement is performed at conductors in low-voltage distributors, e.g. at circuit breakers in the control cabinet. Thanks to its compact design, installing ENERGYSENS is especially easy – regardless of whether a new system is involved or an already existing system will be retrofitted with energy logging. Its minimal intrinsic consumption assures best possible value for the money.

HIGHLIGHTS



UNIVERSAL

Different sensor variants with 3 or 12 measuring points. Nominal current is 40 A or 80 A.



MINIMAL SPACE REQUIREMENT

All measuring technology united into an extremely small space – its low height is especially advantageous.



INTERFACES

Integration into any system is possible thanks to the universal Modbus interface (TCP/RTU).



TRANSPARENCY

Transparency is the basis for all improvements in efficiency.

Warnings concerning overloads before major damage occurs



RETROFITTING

Easy to retrofit energy logging, directly within existing systems even where space is limited



INTRINSIC CONSUMPTION

Very low intrinsic consumption as compared with other measuring systems

YOUR ADVANTAGES



SCALABLE

FOR EXCELLENT FLEXIBILITY OF THE SYSTEM LAYOUT

- The modular system consists of the **ENERGYSENS I COM** basic module and up to 10 sensors, e.g. **ENERGYSENS I ES4003**.
- The sensors, in turn, have multiple measuring points by means of which power can be measured for individual consuming devices.
- The system can be expanded or changed at any time. Up to 120 measuring points can thus be integrated into the system via a single communication unit.



TRUE POWER MEASUREMENT

FOR EFFECTIVE AND TARGETED ENERGY MANAGEMENT

- The high-speed bus system makes it possible to ascertain power values thanks to individual allocation of voltage to each separate current measuring point.



TIME-SAVING INSTALLATION

FOR ERROR-FREE INSTALLATIONS WHICH FUNCTION RIGHT OFF THE BAT

- The sensors are mounted in just a few simple steps.
- Fast installation of the basic module on 35 mm top-hat rail in any desired mounting position with diverse options.

ECS – THE SMART WAY TO COST CONTROL



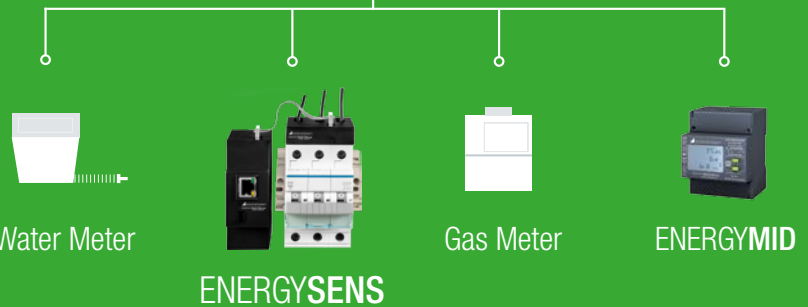
IDEALLY INTEGRATABLE

FOR HIGH-SPEED COMMUNICATION WITH A GREAT VARIETY OF SYSTEMS

- Flexible communication and remote read-out via integrated interface.
- Diverse connection options via Modbus TCP or Modbus RTU.
- Free configuration tool for quick integration into any system environment – even without programming knowledge.



Analog, SMS,
e-mail, GSM,
Alarm Message



The Energy Control System (ECS) from GOSSEN METRAWATT is the clever solution for logging energy data. It provides the fundamentals for optimizing consumption and load, as well as for cost center billing.

ENERGY MANAGEMENT PER EN 50001

Together with the multifunctional SMARTCONTROL data logger, ENERGYMID energy meters serve as the basis for an energy management system in accordance with ISO 50001.

ENERGISENS expands the ECS system to include a simple retrofitting solution. Evaluation and report generation are conducted simply and reliably by means of SMARTCOLLECT data management software.

SAMPLE APPLICATION



The task of logging energy and power data is becoming more and more complex.

Furthermore, companies are experiencing an increasing desire for considerably more consumption-related data, in order to make processes more transparent and efficient.

The installation of energy logging after the system is already up and running is an especially great challenge in this respect.

In particular where space is limited, conventional logging systems can no longer be installed under these circumstances.

This is precisely where the ENERGYSENS intelligent energy sensor comes in – with minimal space requirements and easy installation.

Monitoring of Phase Loads and Power Logging for Individual Production Machines

VARIANTS



ENERGYSENS-ES4012 / ENERGYSENS-ES8012





ENERGYSENS-EScom

Type	Description	Article Number
ENERGYSENS-EScom	Basic module for connection of up to 10 ENERGYSENS sensors including 5 m ribbon cable and 10 ribbon cable plug connectors	U100A
ENERGYSENS-ES4003	Energy sensor for acquiring data from up to 3 individual consuming devices, power measurement up to 40 A	U100B
ENERGYSENS-ES4012	Energy sensor for acquiring data from up to 12 individual consuming devices, power measurement up to 40 A	U100C
ENERGYSENS-ES8003	Energy sensor for acquiring data from up to 3 individual consuming devices, power measurement up to 80 A	U100D
ENERGYSENS-ES8012	Energy sensor for acquiring data from up to 12 individual consuming devices, power measurement up to 80 A	U100E



ENERGYSENS-ES4003 / ENERGYSENS-ES8003

GMC INSTRUMENTS

 **GOSSEN METRAWATT**
 **CAMILLE BAUER**

GMC-I Messtechnik GmbH
Südwestpark 15 • 90449 Nürnberg • Germany
Phone: +49 911 8602-111 • Fax: +49 911 8602-777
www.gossenmetrawatt.com • info@gossenmetrawatt.com

Further information on
the ENERGISENS series is
available at www.ecs-4.com
via the QR code shown here.

